

# MESIC™

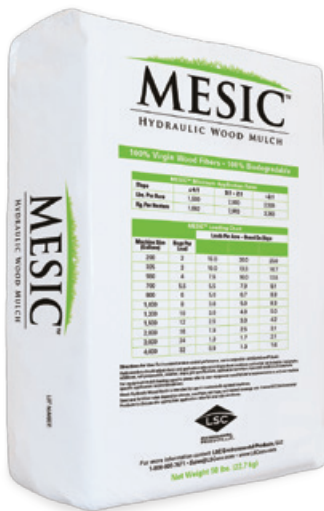
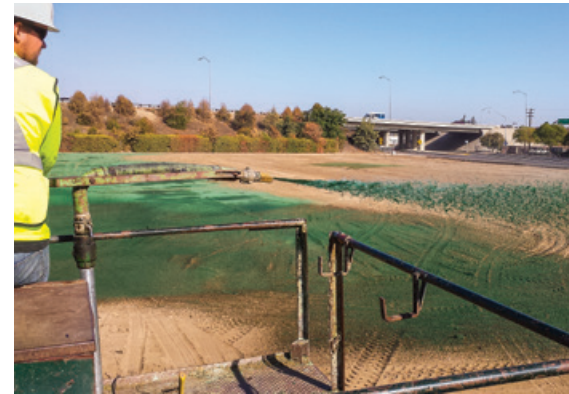
HYDRAULIC WOOD MULCH



## Protective mulch for temporary erosion control and hydraulic seeding applications.

Available in 50 lb. bags.

Mesic™ Wood Mulch is made from 100% virgin wood fibers for use in hydraulic seeding or temporary erosion control. Mesic™ forms a protective mulch mat that aids in erosion control, holding the seeds in place, and providing an excellent environment for seed germination.



Designed to load quickly, the fibers are an ideal size for swift and easy loading into application equipment. Mesic™ will quickly form a consistent slurry with the water, seed, and fertilizer in the tank and throughout the application process.

Perfect for smaller, low-risk applications, Mesic™ outperforms paper and straw products as a versatile base mulch that stabilizes soil, prevents wind and water erosion. For larger, more robust applications, we are proud to offer an entire line of erosion control products including Connect™, Cube™, and EarthGuard®.



# MESIC™

## HYDRAULIC WOOD MULCH

### Directions for Use

Hydroseeders should adjust slurry and application rates according to local conditions such as but not limited to: topography, additives, soil preparation, weather, slope, job specifications, application technique, type and condition of equipment.

For equipment mulch loading capacity please refer to your equipment manufacturer's recommendations and your machine specific application recommendations.

Mesic™ Hydraulic Wood Mulch is intended for use in mechanically agitated machines.

- **To aid in installation for irrigated seeding applications, use in conjunction with LSC EarthBound Tackifier.**

- **To provide erosion protection, use in conjunction with LSC EarthGuard®.**

**Contact us today for more information.**



Information and statements herein are believed to be reliable but are not to be constructed as a warranty or guarantee. Some extreme situations may require higher application rates. LSC Environmental Products, LLC offers no warranties, express or implied. Nothing herein is to be taken as permission to practice any patented invention without a license. Mesic™, Connect™, Cube™ and EarthGuard® are registered trademarks of LSC Environmental Products, LLC. All rights reserved. © 2017 LSC Environmental Products, LLC.

MESIC™ Minimum Application Rates			
Slope	≤ 4:1	3:1 – 2:1	> 2:1
Lbs. Per Acre	1,500	2,000	2,500
Kg. Per Hectare	1,682	2,803	3,363

MESIC™ Loading Chart				
		Loads Per Acre – Based On Slope		
Machine Size (Gallons)	Bags Per Load	≤ 4:1	3.1 – 2:1	> 2:1
200	2	15.0	20.0	25.0
325	3	10.0	13.3	16.7
550	4	7.5	10.0	12.5
700	5.5	5.5	7.3	9.1
800	6	5.0	6.7	8.3
1,000	8	3.8	5.0	6.3
1,200	10	3.0	4.0	5.0
1,500	12	2.5	3.3	4.2
2,000	16	1.9	2.5	3.1
3,000	24	1.3	1.7	2.1
4,000	32	0.9	1.3	1.6

Seed and fertilizer rates depend on climate, seed type, soil type, and desired coverage rate. Contact LSC Environmental Products to discuss site appropriate application rates for your site conditions.

For technical services or to locate your nearest Mesic™ dealer:



Call: **1-800-800-7671** • Email: **Sales@LSCenv.com**  
 Visit LSC online at: **www.LSCenv.com**  
**LSC Environmental Products, LLC**  
 2183 Pennsylvania Ave., Apalachin, NY 13732